



SCHOOL PROGRAMMES



WORMLOVERS CURRICULUM PACKAGES



Wormlovers are passionate promoters of worms as a key element in managing organic waste. Education is central to our mandate, from school kids through to CEO's.

Our curriculum packages for Primary years F-6 engage the students in discovering the many types of worms, setting up a worm farm and caring for worms, the nutrient cycle, worm anatomy and reproduction and why turning your organic waste into beautiful plant food is important for the environment.

We then use these central concepts to develop skills across all areas of the **Australian Curriculum**, with content descriptors and elaboration provided and a link to the relevant curriculum detail online.

In addition to the in-class activities, a school worm farming project can help connect children to the fundamental processes in nature. Wormlovers can supply the Hungry Bin worm farm complete with worms - the easiest and most efficient worm farm on the market.

See over the page for an outline of our packages, and details on how to order.

Love the worm, love the world!



OTHER SERVICES

Wormlovers can also provide a whole school package - using multiple bins to manage your school's organic waste. Whole school worm farm systems are a great sustainability measure, fascinating teaching tool, and the missing link in your school garden.

Wormlovers can supply worms and worm farms directly to your door if you want to rejuvenate your existing worm farm.

We also carry out classroom incursions in Melbourne, Sydney and Brisbane - invite a passionate Wormlover into your class!

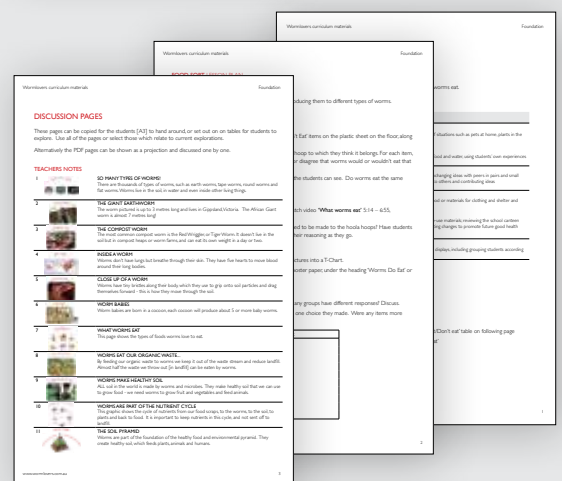
Videos



Student resources



Teacher resources



WORMLOVERS CURRICULUM PACKAGES



FOUNDATION

A2 Class poster
A3 Discussion pages
Teachers notes & lesson plans
Worksheets
Video : *Introduction to worms*
Video : *What worms eat*

Science
[\(ACSSU002\)](#)
[\(ACSSU003\)](#)
[\(ACSSU004\)](#)
[\(ACSHE013\)](#)
[\(ACSIS014\)](#)
[\(ACSIS011\)](#)
[\(ACSIS233\)](#)
[\(ACSIS012\)](#)
Design & Tech
[\(ACTDEK003\)](#)
[\(ACTDEP005\)](#)

English
[\(ACELA1437\)](#)
[\(ACELY1646\)](#)
[\(ACELY1784\)](#)
Maths
[\(ACMNA002\)](#)
[\(ACMNA289\)](#)
[\(ACMNA005\)](#)
[\(ACMSP011\)](#)

Worm Food Sort
Students sort through a range of items to explore the foods worms eat.

Little Worm
Read the poem as a class and discuss with students. Students work individually or in pairs to complete the worksheet. Students share their pictures.

Wormy Problems
Students work individually or in pairs to complete the worksheet.

LEVELS 1-2

A2 Class poster
Teachers notes & lesson plans
Worksheets
Video : *Introduction to worms*
Video : *Anatomy and reproduction*

Science
[\(ACSSU017\)](#)
[\(ACSSU211\)](#)
[\(ACSHE021\)](#)
[\(ACSHE022\)](#)
[\(ACSIS024\)](#)
[\(ACSIS025\)](#)
[\(ACSIS213\)](#)
[\(ACSIS029\)](#)
[\(ACSSU030\)](#)
[\(ACSSU032\)](#)
[\(ACSHE035\)](#)
[\(ACSIS037\)](#)
[\(ACSIS038\)](#)
[\(ACSIS042\)](#)

English
[\(ACELA1446\)](#)
[\(ACELA1453\)](#)
[\(ACELA1454\)](#)
[\(ACELY1656\)](#)
[\(ACELY1788\)](#)
[\(ACELA1461\)](#)
[\(ACELA1470\)](#)
[\(ACELY1666\)](#)

Maths
[\(ACMSP262\)](#)
[\(ACMSP263\)](#)
[\(ACMMG037\)](#)
[\(ACMSP049\)](#)

Design & Tech
[\(ACTDEK003\)](#)

Worm Anatomy
Students examine the parts of a worm, the function of a worm's anatomy and how worms reproduce.

Wriggling Worms
Students investigate strategies for simple operations by adding and subtracting worms from worm farms.

Wiggling Worm Words
The class creates a mind map of all the words they can think of that relate to worms. Students work in pairs or groups to cut out the worm segments and stick them onto paper to create words, then share their posters/workbooks and discuss their work.

LEVELS 3-4

A2 Class poster
Teachers notes & lesson plans
Worksheets
Video : *Introduction to worms*
Video : *Worm farming*

Science
[\(ACSSU044\)](#)
[\(ACSHE051\)](#)
[\(ACSSU072\)](#)
[\(ACSSU073\)](#)
[\(ACSSU074\)](#)
[\(ACSSU075\)](#)
[\(ACSHE062\)](#)

Maths
[\(ACMSP069\)](#)
[\(ACMSP095\)](#)

English
[\(ACELA1476\)](#)
[\(ACELY1676\)](#)
[\(ACELY1792\)](#)
[\(ACELA1488\)](#)
[\(ACELA1489\)](#)
[\(ACELA1498\)](#)
[\(ACELY1687\)](#)
[\(ACELY1688\)](#)

Health
[\(ACPPS040\)](#)
[\(ACPPS040\)](#)

Worms at Work
Students build mini worm farms and make predictions and observations about what happens when worms are under the ground.

Worm farmers
Students create a procedure poster on setting up a worm farm.

Where are the worms?
Students use their knowledge of number operations to create and compare groups of worms in worm farms.

LEVELS 5-6

A2 Class poster
Teachers notes & lesson plans
Worksheets
Video : *Introduction to worms*
Video : *The Nutrient Cycle*

Science
[\(ACSSU043\)](#)
[\(ACSHE083\)](#)
[\(ACSSU094\)](#)
[\(ACSSU095\)](#)
[\(ACSSU096\)](#)
[\(ACSHE100\)](#)

English
[\(ACELA1512\)](#)
[\(ACELY1796\)](#)
[\(ACELY1699\)](#)
[\(ACELA1517\)](#)
[\(ACELY1709\)](#)
[\(ACELY1816\)](#)

Maths
[\(ACMSP118\)](#)

What Worms Want
Students design an experiment to test environmental factors preferred by worms.

What Do We Want!
Students create a persuasive text calling for worm farms in their school [or if they have one why all schools should have a worm farm].

Filling the Farms
Students deal with division of numbers with remainders, using their knowledge of other operations to help them solve problems.

CLASSROOM INCURSIONS!

Invite a Wormlover into your class...
- 40 minute incursion [one class period]
- video content
- hands on activities
- age appropriate curriculum pack for the teacher

Available in Melbourne, Sydney and Brisbane \$350

Email for prices on combining your incursion with setting up a worm farm, or servicing of your existing school worm farms.

DOWNLOAD CURRICULUM FROM

WORMLOVERS.COM.AU/schools-curriculum/

Book an incursion at sales@wormlovers.com.au
and we can provide an invoice for payment.



SCHOOL WORM FARMS

Whether you want a single worm farm or enough to reduce all your waste, we can help. Worm farms are ideal for integrating into a kitchen garden projects, and an integral part to sustainability education.



School worm farm services may include;

- Waste audit to assess worm farm requirements
- Design and installation of Hungry Bin multi-bin worm farm system
- Worm farming workshops for staff and students
- Advice on using worm castings and worm juice in your school garden
- Instruction and maintenance documentation
- Quarterly maintenance and services, including written report and advice.

Whole School Package

For schools seriously committed to promoting worm farming and wishing to reduce their waste. Ideal for integrating into a kitchen garden project, this package may include;

- Waste audit to assess worm farm requirements
- Design and installation of Hungry Bin multi-bin worm farm system
- Workshops for staff and students
- Advice on using worm castings and worm juice in your school garden
- Instruction and maintenance documentation
- Unlimited Wormlovers help line and email support
- Quarterly maintenance and service report
- Dynamic garden beds using worm products and wicking systems can also be added to the package.

System design, education programme and cost are tailored to your school requirements.

Schoolyard Package

- Presentation and classroom discussion for target age
- Worksheet for each student
- Hands on demonstration setting up a worm farm
- Worm anatomy, behaviour and feeding
- Worm inspection with magnifying glass
- Importance of worms for waste processing and environment
- 160L Hungry Bin worm farm
- 2000 worms and bedding
- Staff instruction and maintenance documentation
- Wormlovers help line support

Classroom Package

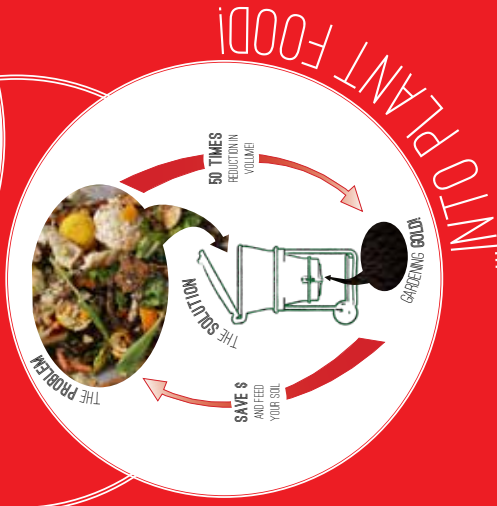
- Presentation and classroom discussion for target age
- Worksheet for each student
- Video information and hands on activities
- Worm anatomy, behaviour and feeding
- Nutrient cycles and reducing food waste
- Worm inspection with magnifying glass
- Importance of worms for waste processing and the environment.

CONTACT US

We can customise worm farm requirements to suit your school - contact us for more information and pricing at sales@wormlovers.com.au

WWW.WORMLOVERS.COM.AU

TURNING WASTE...



Worm farming on any scale - from the domestic to medium scale and beyond - can make significant contributions to waste reduction, nutrient cycling, food production, improved plant health and reductions in carbon emissions. Get into it!

MEET THE HUNGRY BIN WORM FARM

The Hungry Bin is the most efficient and easy to use worm farm available, solving all the issues of other designs.

The unique shape encourages worms to access the food scraps at the top, leaving compressed castings below.

High quality construction, NZ designed and manufactured in UV stabilised, food grade plastic on zinc plated frame.

Large capacity processing up to 2kg of organic waste a day, producing quality worm castings and liquid soil conditioner.

Easy harvesting of castings without heavy, messy lifting - just clip off the lower tray to access 4 litres of quality compost.

Tight fitting lid at a comfortable operating height, keeps out pests and vermin and is very convenient to open and close.

Large diameter wheels, makes moving the bin light work.

Suits all scales from home worm farming to industrial level waste processing.

